

Chesapeake Region Lace Guild

Where lacemaking lives on



Advanced Bucks Point pattern option for class.

From the President ...

As I write this message we are just two weeks away from Spring Lace Day, Saturday, April 27, from 9:30-3:30. Bring your own lunch and beverages as usual.

The Board has worked hard to plan a day that you can

- meet with your lace friends across the Chesapeake Region
- display the lace you have made since the last Lace Day
- hear from Louise West - a teacher and author from Derby, England
- learn a new skill during a mini workshop - check the supply lists
- enjoy shopping with Van Sciver Bobbin Lace
- participate in the Scholarship drawing
- or just lace and chat with friends and meet new ones

There are more details in this newsletter.

*-Linda Kay Benning
CRLG President*

You are cordially invited to attend the

~CRLG SPRING LACE DAY~

Saturday, April 27, 2024

1203 Merten Hall, George Mason University

4400 University Drive, Fairfax, VA

- 9:30 am - Registration opens and shopping begins

Vender: Van Sciver Bobbin Lace

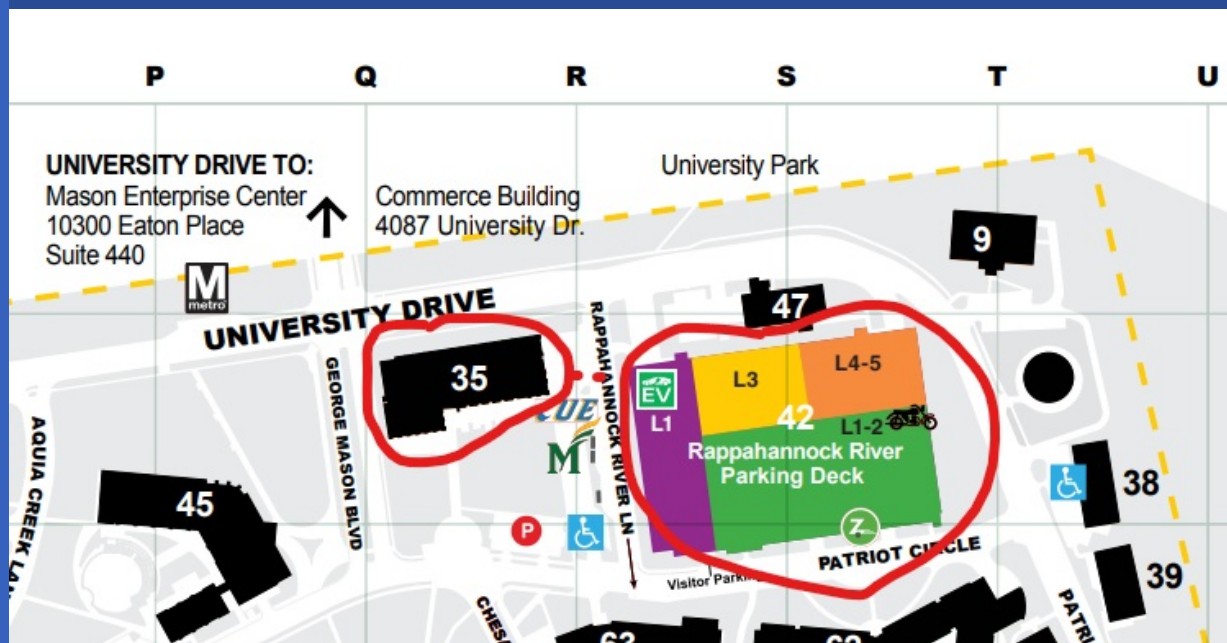
- 10 am - CRLG business meeting
- 11 am - Lecture by Louise West

“From Cotton to Concrete and Beyond”

- 12 noon - Bring your own lunch and drinks
- 1 pm - Mini Workshop *Session #1*
- 2 pm - Scholarship Drawing
- 2:15 pm - Mini Workshop *Session #2*

- 3:15 pm - Clean Up and Adjournment

See important parking information below.



NEW LOCATION FOR LACE DAY!

George Mason University's Merten Hall (#35 on the map above) is easy to find!

Address for GPS/maps: Rappahannock Parking Deck
4395 University Dr, Fairfax, VA 22030

When you arrive on campus use the **Visitor's Entrance** to park in the **Rappahannock River Parking Deck** - enforcement of parking fees is suspended that day during our event so you won't need to pay anything.

Merten Hall is across Rappahannock River Lane from the garage. Manhattan Pizza and Panda Express are on the first floor and will be open.

Lace Day rooms are on the first floor of **Merten, 1203 and 1204**.

See the full campus map here: [Fairfax Campus Map](#)

[Afternoon Mini Workshops](#) *(you will be able to attend two)*

Limit is 5 students at a table plus the teacher
Round 1 - 1:00- 1:45 pm
Round 2:15 - 3:00 pm

“Making Leaves in Bedfordshire” with Louise West

Bring your own pillow with two pairs wound with Presencia Finca 60, Egyptian cotton 50/2 or 60/2 plus other lace making supplies. Louise welcomes you to video her if you wish.

- How to start and end a leaf
- How to shape a leaf

- How to make consistent leaves in a project

“Fish for the Montgomery County Fair 75th Anniversary”

with Ann Manyin and Yoko Barr

About 50 fish have been completed to date but more are needed. Bring your thread choices - 20 inches is sufficient in six -seven color choices

- Lace a fish in your choice of colors and threads
- Learn how to add a bead in lace
- Decide on the tail features

“Introduction to Armenian Lace” with Mikala Kurkjian

Bring a 4-6 inch square of cotton fabric, size 10 crochet thread, a large-eye sharp needle and scissors

- Learn the Armenian needlelace knot
- Practice making picots and loops of different sizes by learning a traditional pattern
- Instructions for both left- and right-handers will be provided

“Tatted Split Rings” with Susan Kuvelker

Bring two shuttles wound with two colors of tating threads of your choice.

- A split ring allows you to move from one ring to another without a chain
- Learn how to do a split ring
- Learn how to use in patterns

“Crocheted Bobbin Holder” with Janet McKee

Bring a sport weight yarn - at least ¼ of a skein, and a hook to work with it

- Some basic crochet knowledge is helpful
- Pattern calls for both single crochet and double crochet
- Receive the pattern

“Matching Thread Size to a Lace Pattern” with Karen H Thompson

Bring your questions to an expert and eliminate the trial and error method

- Learn to match thread size in Torchon and other lace patterns
- Learn the formula to use for enlarging or decreasing pattern size
- Explore the book that helps show equivalent threads

“Lace and Chat Roundtable” for all

- Bring your current pillow project
- Hear what other Study Groups are working on
- Get help on a technique

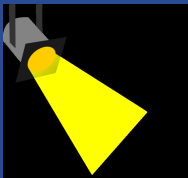
Swap Meet at KK's a Success!



A huge thank you to CRLG members Kazuko Nagashima (in photo in mask and apron) and Ann Manyin for hosting the lace swap at KK's home. It was a huge success.

CRLG raised
\$1,115!

Due to the success of this event we will plan to hold another swap meet!



Member Spotlight:

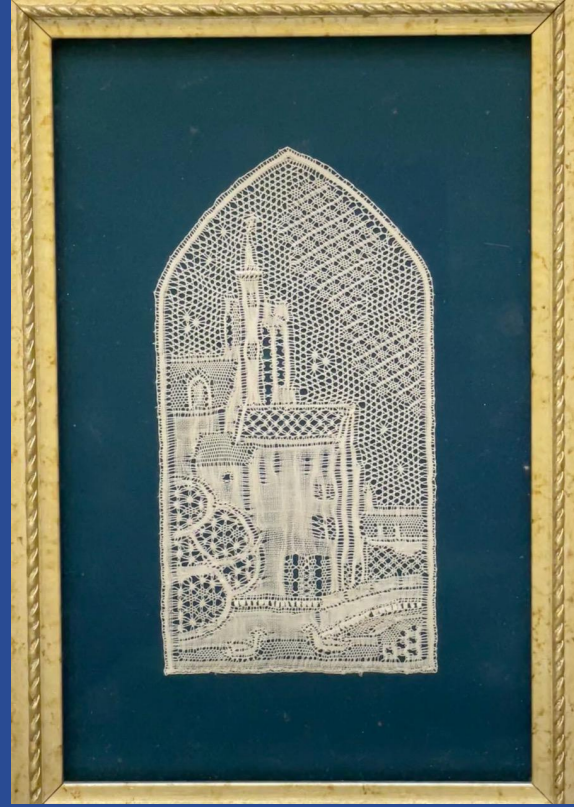
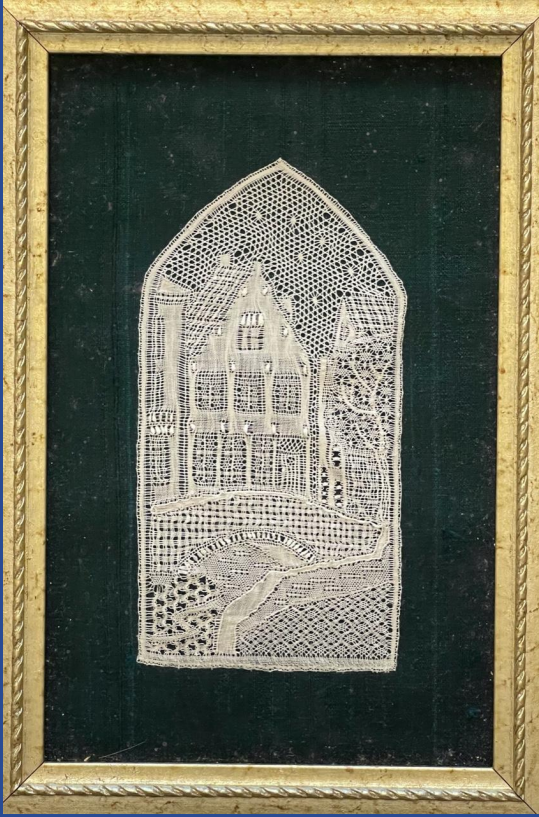
Mary Tod
Log Cabin Lacers

I began making lace in 2001 after resisting trying it for several years because I thought it would take time away from my needlework. Although this is true, I find that making lace is a much more immersive and meditative textile craft than needlework. In the beginning, I mostly taught myself from Geraldine Stott's Introduction to Bobbin Lace book, but with plenty of help from the lacemakers at Aurelia Loveman's house on Tuesday mornings. I then dabbled in a number of different types of lace through CRLG and other workshops to find which type most appealed to me, taking classes in Russian Tape Lace,

Bucks Point, Bedfordshire, Rosaline,
Milanese, Flanders, Chantilly,
Polychrome, and Binche.



My absolute favorite lace is Binche, for the complexity of the designs and the detail that can be achieved by a talented designer/artist. Binche was actually my very first workshop taught by Vera Cockyut, barely 5 months into starting to make bobbin lace, and it was so intense I thought it was even harder than getting my doctorate degree in physiology. I felt like I hadn't learned much of anything when it was over, but to my surprise, a year later when I tried picking it up again in preparation for another Binche workshop, it all returned to me, and I was able to figure out the process for making snow grounds again on my own. I continued studying Binche in classes at IOLI convention and later at Lace at Sweet Briar retreats, where I studied with Michael Giusiana and Anny Noben-Slegers. The photos are all of Binche lace pieces that I have worked and framed, with the 3 scenes from Bruges coming from a pattern book called *Lieflijk Brugge*, from the Kantcentrum Master Class in Binche guided by Annemarie Verbeke. The only piece of lace I have ever timed to see how long it took me to make was the windmill: from start to finish, it took 115.25 hours.



I am also a member of IOLI and of OIDFA, and have attended 5 IOLI conventions, but not yet an OIDFA Congress. I was planning to go when it was going to be in Belgium in 2018, but there was a problem that year and OIDFA was held in The Netherlands instead. However, the Belgian Lace Guilds held a separate Congress in Bruges that I was lucky enough to attend, and it was the most amazing experience when combined with the post-Congress tour of many cities and smaller towns, each with multiple exhibitions of lace from their area. That trip was eye-opening, and I'd love to return to Belgium and study Binche lace at the Kantcentrum sometime. That would be a dream come true.

Photos:

*Primroses, designed by
Anny Noben-Slegers*

*Sint-Jansmolen, designed
by Jeanne Vroemen*

*Gouden Handrei, designed
by Jeanne Vroemen*

*Gruuthuse, designed by
Alice Harte*



**Enter Your Lace in the
Fair!**

Lace makers — Summer is fast approaching and that means the Montgomery County Agricultural Fair



and the Maryland State Fair are just around the corner. This is our chance to show off our work, win prizes, and introduce others to the local community of lace makers.

Photo above: judging day at the Montgomery County Fair.

This year the Montgomery County Agricultural Fair runs from August 9th through August 17th. This is a special year for the Fair. It's the Fair's 75th Jubilee and they're looking for lots and lots of entries in bobbin lace, needle lace, and tatting to help with the celebration.

The Maryland State Fair runs for three weekends: Aug. 22 - 25, Aug. 29 - Sept. 2, and Sept. 5 - 8. Please note that for the Maryland State Fair all doilies, snowflakes, and tatted or lace collars must be mounted on poster board. Items should be sewn to the mounting board, if possible.

CRLG presents special awards for bobbin lace and tatting at both Fairs.

As in the past, we will arrange to transport entries from the Montgomery County Fair to the State Fair, but they **MUST** be pre-registered online. Online registration is not available yet but it usually opens in July. For one \$2.00 fee, you can register all of your entries.

More information about the lace categories, entry requirements, and the schedule will be updated for 2024 and available online in the near future.

Please monitor the Montgomery County Agricultural Fair web site at mcagfair.com and the Maryland State Fair web site at marylandstatefair.com for important updates and the 2024 catalogs as they become available.



PLEASE RENEW YOUR MEMBERSHIP

Now you can join the lace guild, or renew your membership, on our updated webpage: CRLG.org

Annual Dues: \$20

[Visit our website](#)

[Click Here for Membership Form](#)

Bring a check or cash to renew your membership at SPRING LACE DAY!

News from the Librarian...

There is a current list of library holdings in the Membership Directory that went out in February. Azhar will be bringing the materials to Spring Lace Day for people to check out.



International Organization of Lace, Inc.

The Chesapeake Region Lace Guild (CRLG) is an educational non-profit association. As a Charter Chapter of the [International Organization of Lace, Inc.](#), the objectives of the Guild are to promote interest in the fine old laces, to preserve fine laces for posterity, to study the history and characteristics of lace, to teach and promote lacemaking and lace identification, to promote and encourage lace exhibits, and to encourage museums that own lace collections to exhibit their collections and make them generally available for viewing by the public at large.

SEND YOUR PHOTOS TO SHARE!

Please send photos and articles

(especially works-in-progress for Work-in-Progress Wednesdays)

to post on Facebook

to Holly Lacusky at hclacusky@gmail.com

